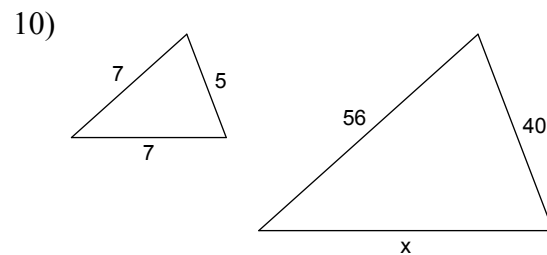
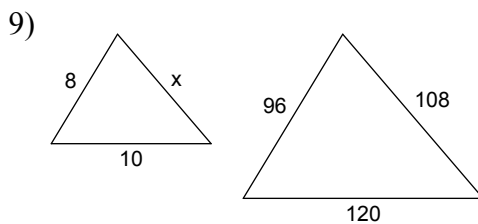
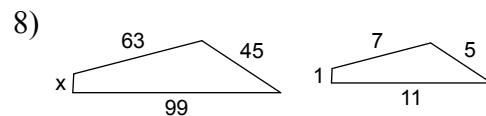
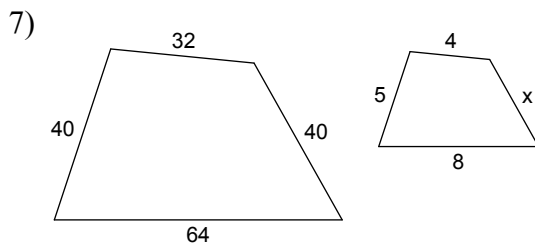
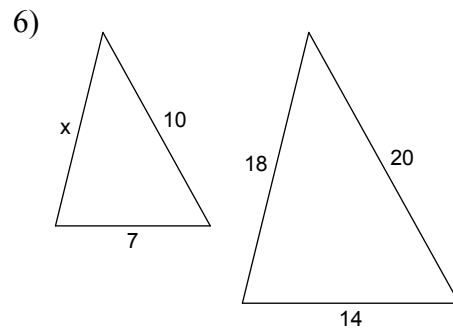
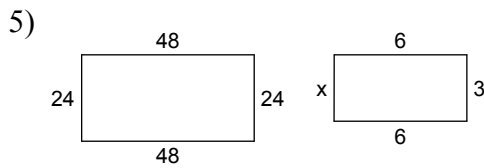
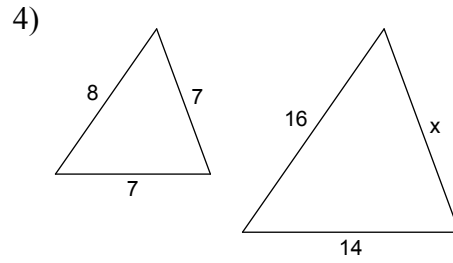
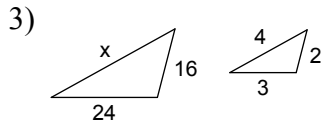
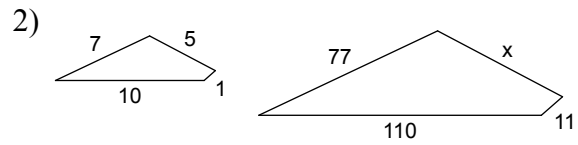
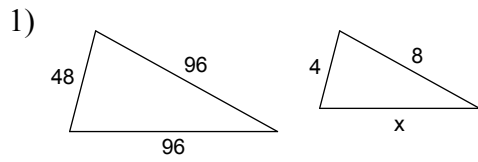


# Dilation Activity

- Determine the scale factor of dilation from the pre-image on the left to the image on the right.
- Determine the length of the missing side (x) using your calculation.



## Answers to Dilation Activity

1) 8  
5) 3  
9) 9

2) 55  
6) 9  
10) 56

3) 32  
7) 5

4) 14  
8) 9